

# PowerTrack®

## Mobile Solution Builder

Imagine a software application which can be configured to automate a broad range of your mobile data collection requirements, all through a simple point and click interface!

With no need for time consuming or expensive up-front programming, projects can be rapidly implemented, helping to achieve a quick ROI on your mobility projects.

The PowerTrack Mobile Solution Builder is the tool of choice for rapid piloting of new business models involving mobile computing and easily adding mobile capability to existing systems.

### Mobile Solution Builder - Overview

The PowerTrack Mobile Solution Builder is a configurable Windows Mobile application for automated data collection, data lookup and validation. The software may be integrated with any ODBC compliant database, essentially mobilizing applications that are already in place. PowerTrack also integrates with ASCII flat files, import/export routines and APIs.

The PowerTrack software is an easy-to-use data collection system combining a PC Server application and a PDA client application running on Microsoft's Windows Mobile operating system. With its flexibility and ease-of-use, PowerTrack is designed for a wide range of data collection jobs, including:

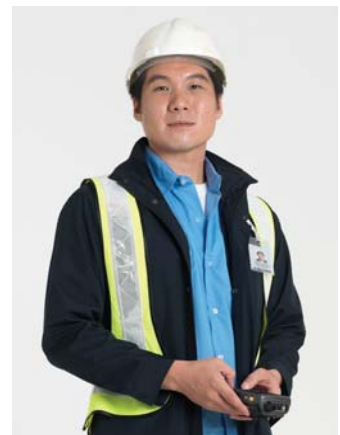
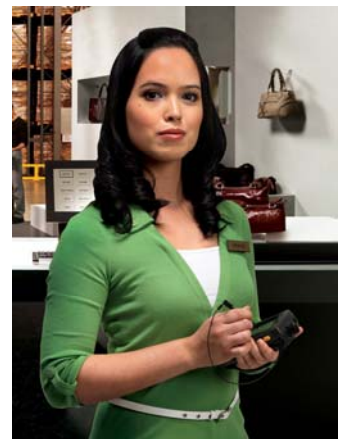
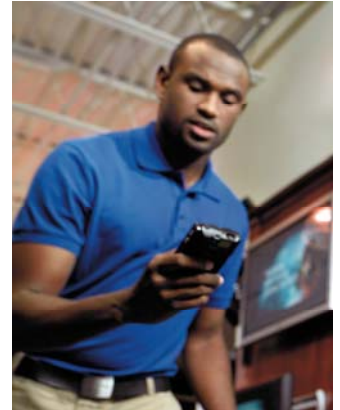
- Inventory and asset tracking
- Work in Process/production tracking
- Labor and time tracking
- Document tracking
- Cart/bin tracking
- Cycle counting
- Equipment and material usage
- Retail applications
- Statistics and survey taking
- And more

PowerTrack is particularly effective at automating reports and other collected data that must be submitted from the field or remote locations.

### Using the Mobile Terminal

Data is quickly and accurately entered into the mobile terminal by using bar code scanning, drop down select lists, or the PDA keypad. Notes can be entered and signatures captured. The software will automatically capture date and time of day, as well as optionally collecting GPS coordinates to document the location of the user.

Essential to ease of use, the system allows for sophisticated filtering so that the choices available to the user can be filtered based on prior selections and the user ID itself.



## Communication

Users may send transactions as they occur or batch collect transactions and transmit the accumulated records at a later time. For wireless connections (wireless LANs or cellular based wide area networks) captured data is sent 'real time' to the PowerTrack server. When the PDA is out of range, it stores the captured records in a batch file. The system can be configured to automatically send the un-transmitted files when the PDA senses a re-established wireless connection.

## Application Setup and Configuration

Applications are created in a matter of minutes using the software's integrated Configuration Utility. Prompts and data field titles are user-defined for custom configuration. Properties and functions for each prompt are also user-defined. A preview window displays the designed PDA screen format.

Data entry is validated in the PDA database table when validation is selected in the Configuration Utility.

## Data Integration

PowerTrack provides an easy method to define connections to external data sources. This allows the user to interface with existing company applications and databases. The Conduit Manager allows connection to any ODBC compliant database, table and field selections – for population of select lists and data validation. The Export Manager exports collected data to a flat file or ODBC database in real time, scheduled, or manually, and configures the output file in the required format.

## Transaction Review and Approvals

All transaction records uploaded from the PDA to the PC server may be reviewed and edited using Transaction Review. Select criteria in the Transaction Review to quickly and easily generate reports. Optionally, transactions can be approved in a multi-level approval application prior to exporting data.

## The PowerTrack Mobile Solution Edge

- Configure the application, define connections to external data sources, and be up and running quickly
- Easy to use, quick data entry using barcodes, drop down user-select lists, or the PDA keypad.
- Signature Capture
- Capture GPS Coordinates
- Connection to any ODBC compliant database, table and field selections
- Connections via wireless LAN and cellular networks
- Quick and easy data collection application design using unique configuration utility
- Create multiple applications with a single tool

## Multiple Applications in One PDA

Use the PowerTrack Mobile Solution Builder to create multiple applications to run on a single PDA. The selection and validation data stored in the PDA may be shared by multiple data collection application screens.

## PowerTrack PC Client

PowerTrack offers PC users access to all the functionality available on the PDA, with a similar look and feel. Transactions from PC users are fully integrated with the data collected from the PDAs.

**Contact our Enterprise Mobility specialists for a demonstration or more information.**



5775 Soundview Drive  
Suite 101 E  
Gig Harbor, WA 98332

800.852.3282  
[www.compsee.com](http://www.compsee.com)