

# Asset Management

## Comprehensive Asset Tracking with Check-In/Check-Out

Your organization depends on having accurate information on all of your physical assets, whether they are fixed in one place, or they circulate between employees or locations. By knowing the locations of every asset and who is accountable, management can make better decisions and take control of escalating asset costs. In addition to achieving reductions in asset loss, employee productivity is increased by having assets where you need them, when you need them.

Compsee's Asset Management utilizes a ready-to-run SQL server database to maintain your asset information. Asset lookups and transactions such as asset check-out, check-in and transfers may be run on a PC or Windows Mobile remote device. Asset history functions and comprehensive reports provide management with information on current inventory and asset activity.

### Tracks Movements and Assignments

During the check out process, assets are assigned to employees quickly and easily through the use of bar code



scanning. An employee ID is scanned or a name is selected from a list. A site and sub-location can be optionally selected. Each asset is scanned and a return date can be recorded. Assets can also be transferred between locations, without an employee assignment. The bottom line is that all asset movements are recorded to enforce employee accountability and accurate inventory.

### Visibility to Assets and Equipment

Whether in the office or in the field, it is important to know the location and availability of assets. The asset lookup capability in Compsee's Asset Management is the most comprehensive in the industry. A user

can quickly search on an individual asset number or model number – or filter results based on category, description, manufacturer, sites, assignment (employee/contractor), business unit/department, and condition.

### Analysis of Asset Usage and Activity

Asset usage can be analyzed by a quick look up of transaction history or through activity reports. Transaction history can be filtered by date range, asset or model number, site, assignment (employee/contractor), business unit/department and by transaction type (check-in, check-out, transfer, new/retired asset). Activity reports point management to areas of

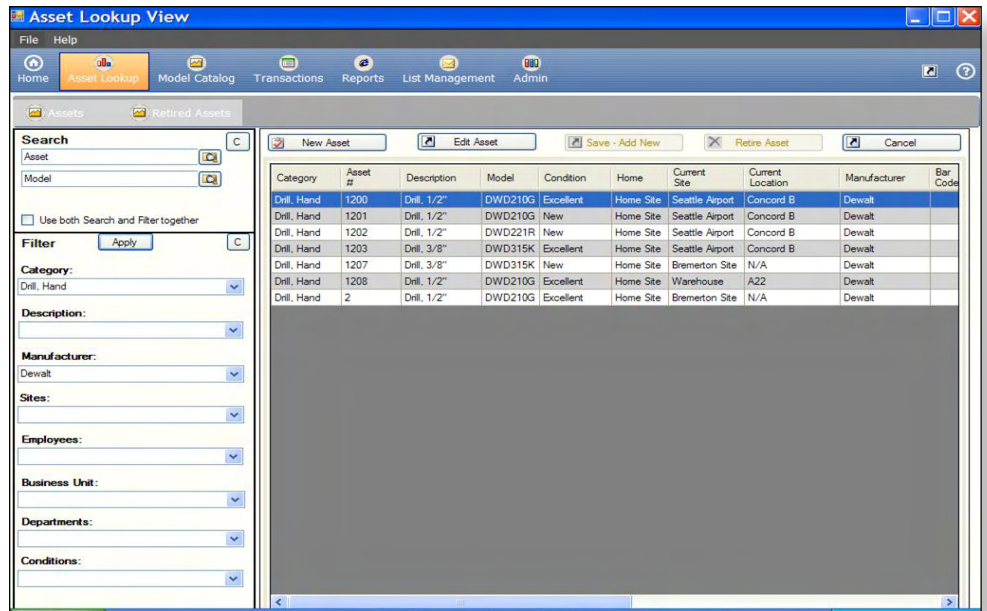
## Benefits

- Reduce loss, theft and neglect by making employees more accountable
- Have assets and equipment where you need them to improve productivity
- Visibility of assets and equipment inventory at multiple sites
- Extensive reporting for effective management and asset decision making

heavy asset utilization or assets that are rarely used, thus guiding future asset purchases.

## Rugged Handheld Support

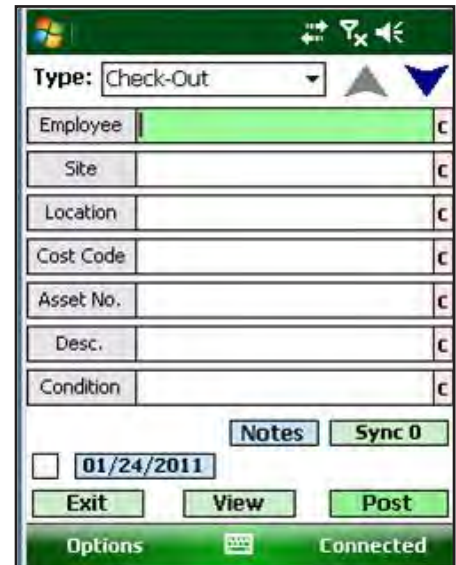
Asset lookups and transactions (check-in, check-out, and transfer) are supported in the field using rugged handheld devices. Handheld units can operate in connected or disconnected mode. Transactions made while disconnected are transmitted to the server when a network connection is re-established. Wireless LAN and Wide Area Connectivity are supported.



## Features

- Asset catalog with model information and manufacturer
- Fast and easy set up of new assets
- Barcode label printing
- User defined asset categories and condition codes
- User defined sites with optional locations
- Assignment to employees, contractors and other third parties
- Transfers between remote sites and/or warehouse locations
- Business unit and department support
- Quick look up of assets with comprehensive search and filtering
- Transaction look up with comprehensive search and filtering
- Tracking of maintenance dates
- Asset inventory and activity reports; Past due report
- Handheld support in connected or disconnected mode
- Excel import of asset data
- .Net Architecture with SQL database

## Customizable Screens



## About Compsee

Compsee, a division of Control Solutions, Inc., is a national leading Auto ID systems integrator, specializing in tracking software solutions. Visit our website to see how companies like yours are lowering costs and improving accuracy.



A Division of Control Solutions, Inc.

5775 Soundview Drive, Suite 101 E  
Gig Harbor, WA 98332

Phone: (800) 852-3282  
sales@compsee.com

www.compsee.com